



DEDICATED TO PRESERVING GRAPEVINE HISTORY

On The Vine

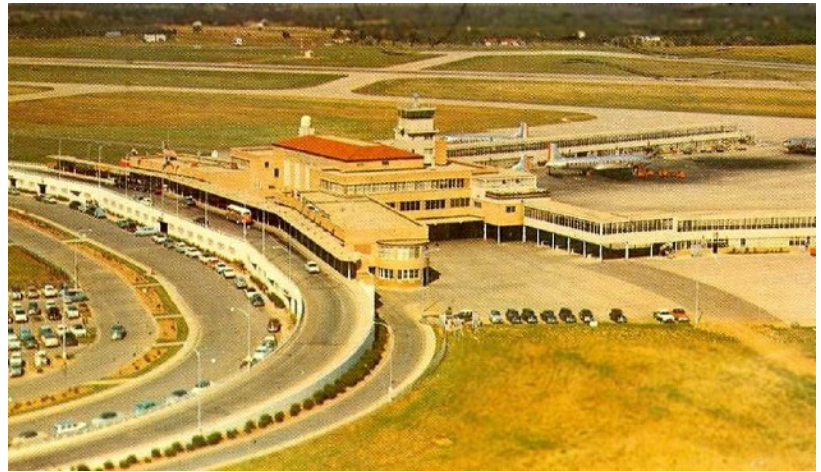
Our Wonderful Museum Visitors

Even 2-year-olds love our museum! Isaac came in today with his mother, grandmother and little sister. His mother said trains fascinated him. When I showed them the train case at the end of the Grapevine Attic, he immediately started pointing and called out "rain...rain...rain!" When she unfastened him from the stroller and I stooped down to show him the case, he was mesmerized by the conductor's hat. I started the narration of the Grapevine Attic and asked if I could pick him up. He stretched his little arms up and let me carry him for the rest of our tour! He also loved putting his hands and feet in the dinosaur foot print.

Don't ever underestimate the curiosity of young kids or their interest in our history. I love adapting my tours to any age group, though I only pick up children that meet a certain weight criteria!

Our museum saw over 7,000 guests in 2018 from the US mainland, Hawaii, Canada and Mexico in North America. Latin American visitors came from Guatemala, Honduras and Venezuela. Internationally we had guests from the British Isles, Slovenia, the Czech Republic, Hong Kong, Thailand, Taiwan, China and the Caribbean.

Deon T. Standlee



The Disappearance of Greater Southwest International Airport

Dallas and Fort Worth agreed on very few things in the early 20th century, one of those being the idea of a regional airport, proposed by Dallas in 1928. Fort Worth did not think an airport was necessary at the time considering Meacham Field, established in 1925, was close to downtown, thriving and had room to grow. Fifteen years later, Fort Worth decided it was time to build an airport to serve the two cities, so they began constructing the Greater Southwest International Airport, Amon Carter Field, in the mid-thirties. Over time, Love Field grew while Greater Southwest declined. The opening of DFW Airport in 1974 signaled the end of Greater Southwest and its ultimate destruction.

William "Bill" Morris, our February speaker, will elaborate more on this subject at the next meeting. Bill was born in Randolph Field, Texas in January 1944 and is a second-generation career Air Force officer. Morris spent 8 years in the Air Force, working in different programs and areas in aviation. He is currently a director at the Fort Worth Aviation Museum, which documents and showcases the aviation heritage of Fort Worth and North Texas.

Please join us on Monday, Feb 25 at 7:00 PM at the Grapevine Public Library to hear this tale of two cities and a lost and forgotten airport. Our programs are free and open to the public with refreshments served at 6:30 PM.

Zoë Gehler



Texas Independence Day Celebration

Mark your calendars for our Texas Independence Day Celebration. We will be hosting an event on March 2 at the Torian Cabin in Liberty Park on Main Street. There will be live music, chili served from a covered wagon and hayrides. Mayor Tate will speak as we honor Texas Independence and Grapevine's 175th birthday. More details will be out in our InfoBlast in about two weeks.



Museum Donor Wall

Joe and Grace Messina are the newest names to be added to the Grapevine Historical Society's Donor Wall. Their family business, "Messina's Shoe Repair" is one of Main Street's longest operating businesses.

Museum Hours:

Tue-Sat: 10:00 AM - 4:00 PM
 Sunday: 11:00 AM - 4:00 PM
 Closed Monday

Next Meeting:

Monday, February 25 at 7:00 PM
 Grapevine Public Library
 Meetings are the fourth Monday of every month except July and December

The Day Passenger Rail Returned to Grapevine, Texas

History was made across Tarrant County on Monday, December 31, 2018, as Trinity Metro's Tarrant Express Railway, better known as TEXRail, made its long-anticipated inaugural run. The one-billion-dollar, 27-mile commuter rail runs from Downtown Fort Worth, through the heart of Downtown Grapevine and on to Terminal B at Dallas/Fort Worth International Airport.

The City of Grapevine held an inaugural breakfast at the Founders Building on Historic Main Street. Mayor William D. Tate, Mayor Pro Tem Darlene Freed, and Council Members Paul Slechta, Mike Lease, Chris Coy and Duff O'Dell were in attendance, along with 50+ Grapevine citizens. Paul W. McCallum welcomed guests and introduced Mayor Tate who gave an uplifting eight-minute speech on the 13-year timeline and process of TEXRail coming to fruition; the importance of mass transit to a hospitality city like Grapevine; and the impact the economic development surrounding TEXRail will have on the city.

"It means a lot to Grapevine," said Mayor Tate. "It's going to create something really special in this Railroad District. Construction is underway for a \$105-million-dollar public/private sector transit-oriented development that will attract visitors to Grapevine's Historic District." Following Mayor Tate's comments, Mayor Pro Tem Freed led Grapevine citizens in a toast to the inaugural run, saluting those who worked to make TEXRail a reality. "We're going to have passenger rail back after 50 years. Congratulations," Freed said, "to all of you and the wonderful opportunities that await. Here, here."

Those in attendance moved to the new Grapevine Main Platform for a ribbon cutting by City of Grapevine officials, making history and signaling the return of passenger rail to Grapevine. The train departed on-time at 10:40 A.M., bound for D/FW Airport North where the official celebration took place. Fort Worth Mayor Betsy Price, North Richland Hills Mayor Oscar Trevino and Mayor Tate, all spoke at the New Year's Eve event. Other officials included Scott Mahaffey, Chairman of Trinity Metro's Board of Directors; Paul Ballard, President and CEO of Trinity Metro and Bob Baulsir, Senior Vice President of Trinity Metro.



Mayor William D. Tate and his Golden Ticket



Grapevine City Officials Ribbon Cutting